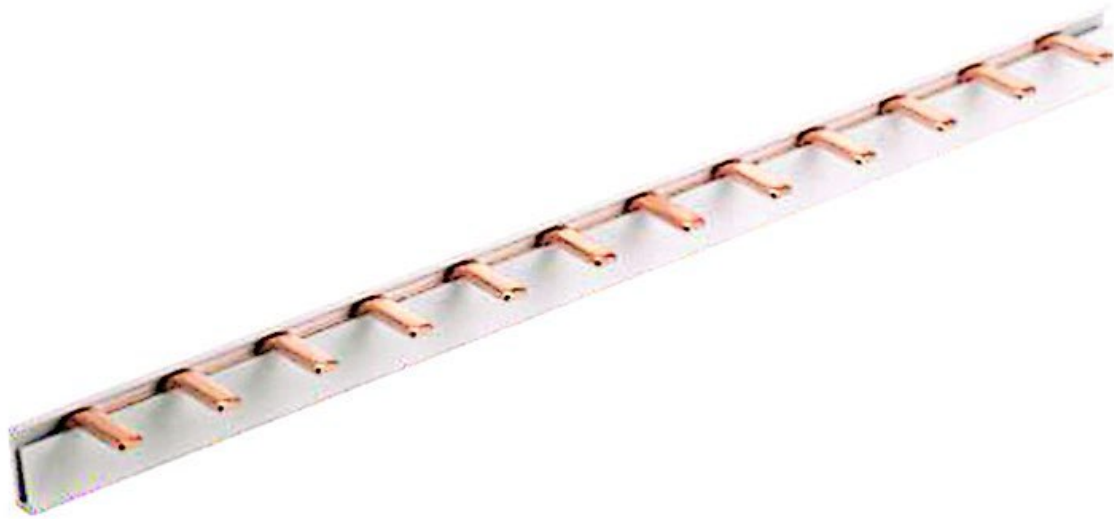
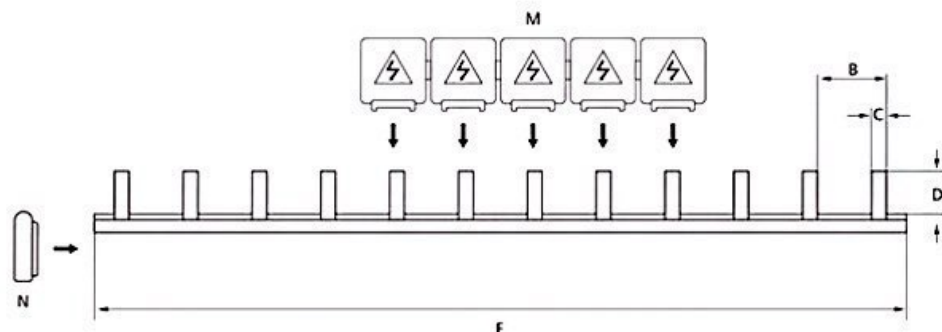


Pin type, 1-phase busbars



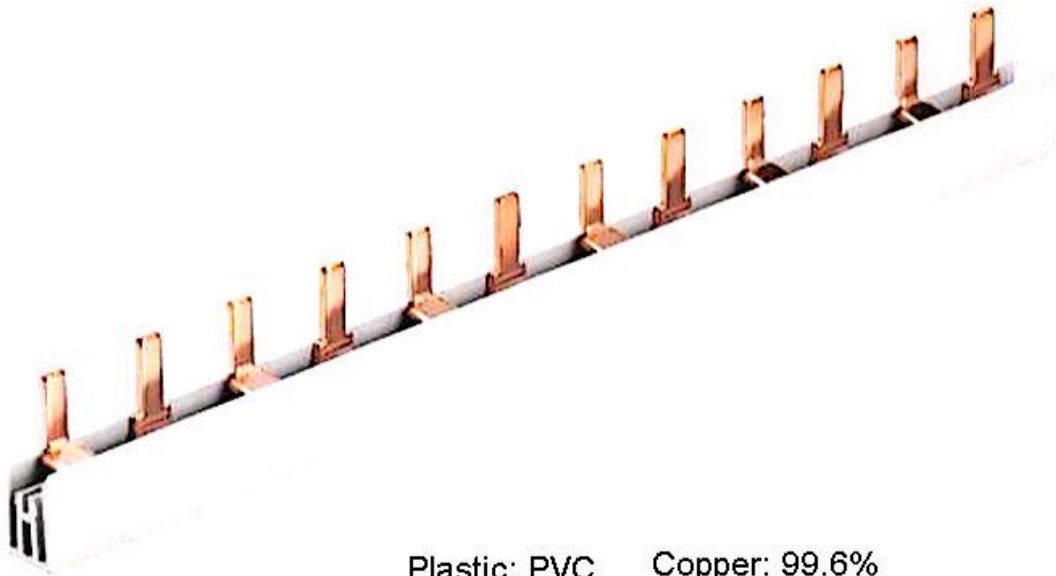
Plastic: PVC Copper: 99.6%
 Operating Voltage: 500V GWIT: 960°C Working Temperature: -20°C~+60 °C

Description	Article No.	A Cross Section	B Distance (mm)	C Width of Pin(mm)	D Length of Pin(mm)	E Modules	F Length (mm)	G Reference Current
S-1L-210/8	KS11208	8mm ²	17.8	4	11.5	12	210	50A
S-1L-210/10	KS11210	10mm ²	17.8	4	11.5	12	210	63A
S-1L-210/13	KS11213	13mm ²	17.8	4	11.5	12	210	70A
S-1L-210/16	KS11216	16mm ²	17.8	4	11.5	12	210	80A
S-1L-1000/8	KS15408	8mm ²	17.8	4	11.5	54	1000	50A
S-1L-1000/10	KS15410	10mm ²	17.8	4	11.5	54	1000	63A
S-1L-1000/13	KS15413	13mm ²	17.8	4	11.5	54	1000	70A
S-1L-1000/16	KS15416	16mm ²	17.8	4	11.5	54	1000	80A
S-1L-1016/8	KS15708	8mm ²	17.8	4	11.5	57	1016	50A
S-1L-1016/10	KS15710	10mm ²	17.8	4	11.5	57	1016	63A
S-1L-1016/13	KS15713	13mm ²	17.8	4	11.5	57	1016	70A
S-1L-1016/16	KS15716	16mm ²	17.8	4	11.5	57	1016	80A



Busbar Series

Pin type, 2-phase busbars

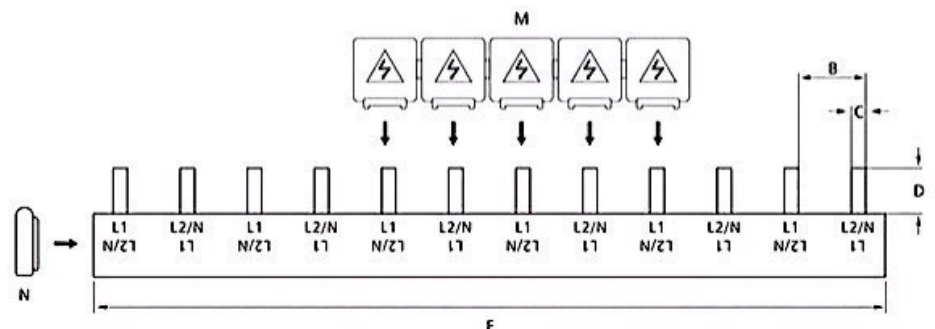
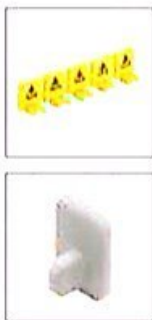


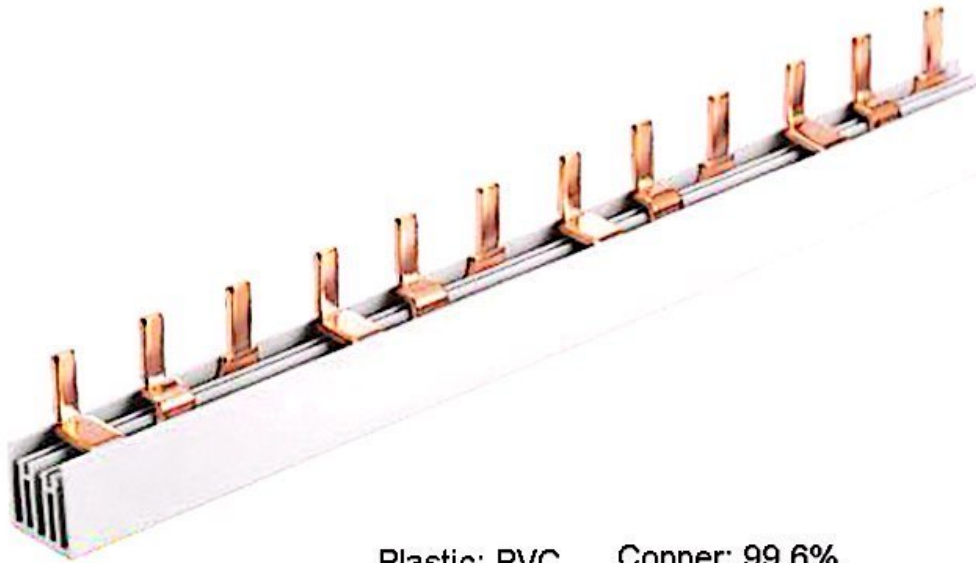
Plastic: PVC Copper: 99.6%

Operating Voltage: 500V GWIT: 960°C Working Temperature: -20°C ~ +60 °C

Description	Article No.	A Cross Section	B Distance (mm)	C Width of Pin(mm)	D Length of Pin(mm)	E Modules	F Length (mm)	G Reference Current
P-2L-210/8	KP21208	8mm ²	17.8	4	11.5	12	210	50A
P-2L-210/10	KP21210	10mm ²	17.8	4	11.5	12	210	63A
P-2L-210/13	KP21213	13mm ²	17.8	4	11.5	12	210	70A
P-2L-210/16	KP21216	16mm ²	17.8	4	11.5	12	210	80A
P-2L-1000/8	KP25408	8mm ²	17.8	4	11.5	54	1000	50A
P-2L-1000/10	KP25410	10mm ²	17.8	4	11.5	54	1000	63A
P-2L-1000/13	KP25413	13mm ²	17.8	4	11.5	54	1000	70A
P-2L-1000/16	KP25416	16mm ²	17.8	4	11.5	54	1000	80A
P-2L-1016/8	KP25608	8mm ²	17.8	4	11.5	56	1016	50A
P-2L-1016/10	KP25610	10mm ²	17.8	4	11.5	56	1016	63A
P-2L-1016/13	KP25613	13mm ²	17.8	4	11.5	56	1016	70A
P-2L-1016/16	KP25616	16mm ²	17.8	4	11.5	56	1016	80A

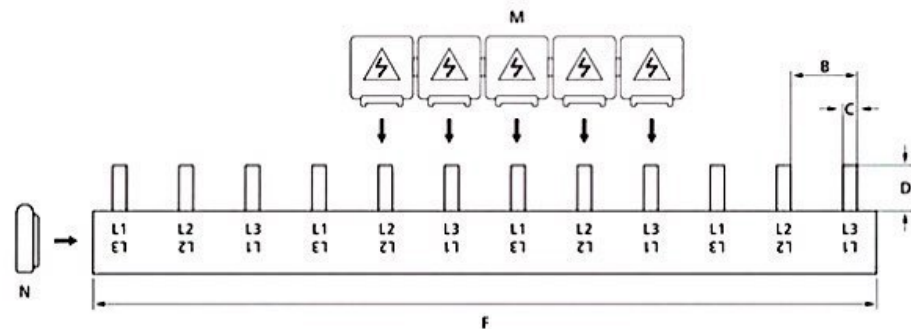
Busbar Series





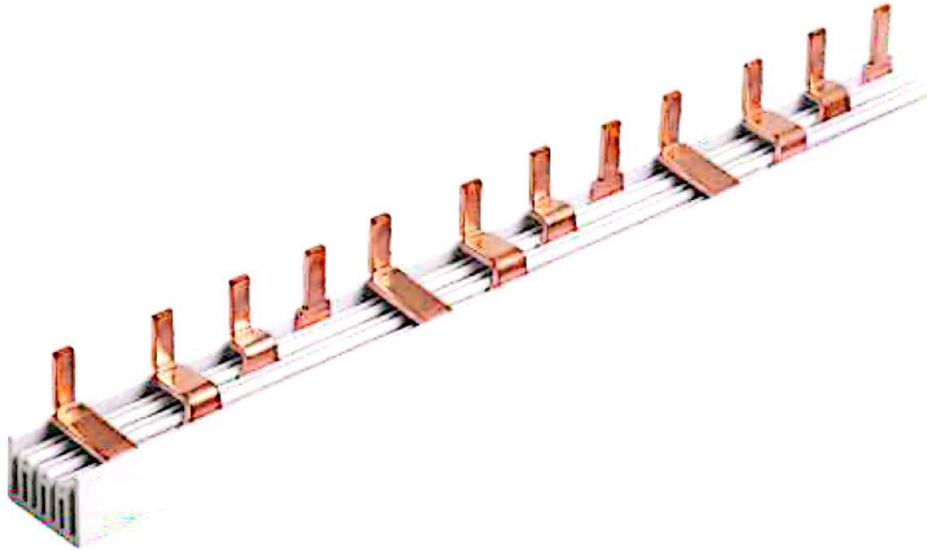
Plastic: PVC Copper: 99.6%
 Operating Voltage: 500V GWIT: 960°C Working Temperature: -20°C~+60 °C

Description	Article No.	A Cross Section	B Distance (mm)	C Width of Pin(mm)	D Length of Pin(mm)	E Modules	F Length (mm)	G Reference Current
P-3L-210/8	KP31208	8mm ²	17.8	4	11.5	12	210	50A
P-3L-210/10	KP31210	10mm ²	17.8	4	11.5	12	210	63A
P-3L-210/13	KP31213	13mm ²	17.8	4	11.5	12	210	70A
P-3L-210/16	KP31216	16mm ²	17.8	4	11.5	12	210	80A
P-3L-1000/8	KP35408	8mm ²	17.8	4	11.5	54	1000	50A
P-3L-1000/10	KP35410	10mm ²	17.8	4	11.5	54	1000	63A
P-3L-1000/13	KP35413	13mm ²	17.8	4	11.5	54	1000	70A
P-3L-1000/16	KP35416	16mm ²	17.8	4	11.5	54	1000	80A
P-3L-1016/08	KP35708	8mm ²	17.8	4	11.5	57	1016	50A
P-3L-1016/10	KP35710	10mm ²	17.8	4	11.5	57	1016	63A
P-3L-1016/13	KP35713	13mm ²	17.8	4	11.5	57	1016	70A
P-3L-1016/16	KP35716	16mm ²	17.8	4	11.5	57	1016	80A



Busbar Series

Pin type, 4-phase busbars



Description	Article No.	A Cross Section	B Distance (mm)	C Width of Pin(mm)	D Length of Pin(mm)	E Modules	F Length (mm)	G Reference Current
P-4L-210/8	KP41208	8mm ²	17.8	4	11.5	12	210	50A
P-4L-210/10	KP41210	10mm ²	17.8	4	11.5	12	210	63A
P-4L-210/13	KP41213	13mm ²	17.8	4	11.5	12	210	70A
P-4L-210/16	KP41216	16mm ²	17.8	4	11.5	12	210	80A
P-4L-1016/8	KP45608	8mm ²	17.8	4	11.5	56	1016	50A
P-4L-1016/10	KP45610	10mm ²	17.8	4	11.5	56	1016	63A
P-4L-1016/13	KP45613	13mm ²	17.8	4	11.5	56	1016	70A
P-4L-1016/16	KP45616	16mm ²	17.8	4	11.5	56	1016	80A

Busbar Series

