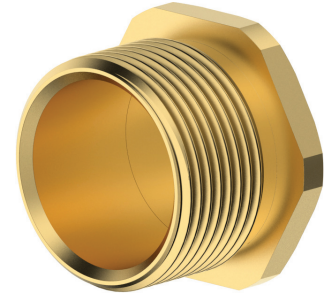
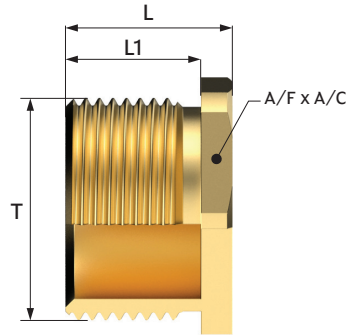


Hex Stop Plug (WP)

Stop Plug are designed to sealing or close any unused entries in electrical enclosures, equipment and junction boxes, etc. Stop Plug are always used to with sealing washer to seal properly. Stop plug are also used for maintain integrity of enclosure and IP rating of equipment.

Stop Plug are generally available in Brass, Nickel Plated Brass, Stainless Steel and Nylon.



METRIC THREAD HEX STOP PLUG

Size	A/F	A/C	L1	L	T
12	14.00	15.50	10.00	13.00	M12X1.5
16	18.00	20.00	10.00	13.00	M16X1.5
20	22.00	24.00	10.00	13.00	M20X1.5
25	27.00	29.50	10.00	13.50	M25X1.5
32	34.00	38.00	10.00	14.00	M32X1.5
40	44.00	49.00	15.00	19.00	M40X1.5
50	54.00	58.00	15.00	20.00	M50X1.5
63	67.00	72.00	15.00	20.00	M63X1.5
75	80.00	85.00	15.00	20.00	M75X1.5
90	95.00	100.00	15.00	21.00	M90X2
100	105.00	112.00	20.00	27.00	M100X2

PG THREAD HEX STOP PLUG

Size	A/F	A/F	L1	L	T
PG7	16.00	18.00	10.00	13.00	PG7
PG9	18.00	20.00	10.00	13.00	PG9
PG11	21.00	23.00	10.00	13.00	PG11
PG13.5	23.00	25.25	10.00	13.50	PG13.5
PG16	26.00	28.00	10.00	14.00	PG16
PG21	32.00	35.00	15.00	19.00	PG21
PG29	41.00	45.00	15.00	20.00	PG29
PG36	46.00	50.60	15.00	20.00	PG36
PG42	55.00	60.00	15.00	20.00	PG42
PG48	65.00	70.00	15.00	20.00	PG48

PRODUCT CODE FOR ORDERING PURPOSE

Type	Size	Thread Type	Material	Accessories
CHSP	16....(for M16)	Metric-(M#)	Brass-1	Lock Nut-5
	12N....(for 1/2" NPT)	NPT (#N)	Stainless Steel-2	IP Washer-6
	12G....(for 1/2" BSP)	BSP (#G)	Brass Nickel Plated-3	Serrated Washer-7
	58ET....(for 5/8" ET)	ET (#ET)		
	PG7....(for PG7)	PG (PG#)		

ORDERING INFORMATION

Item Code: CHSP-12-356
M12 BNP Hexagonal Stop Plug with Nut & Seal

CHSP=Hexagonal Stop Plug, 12=Plug Sizes M12
3= with Brass Nickle Plated Material,
5=with Lock Nut, 6=with IP Washer